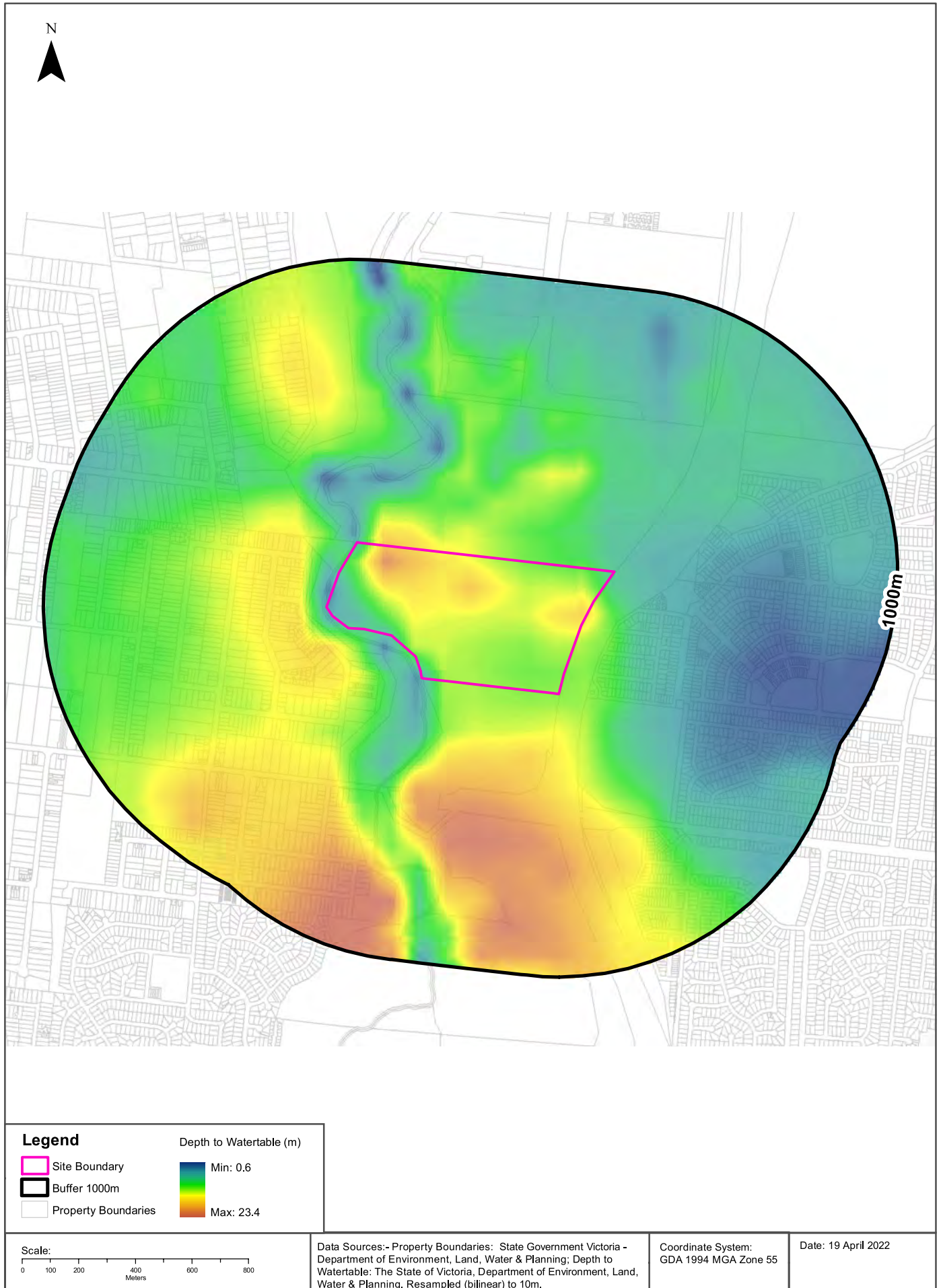


Depth to Watertable

485 Cooper Street, Epping, VIC 3076



Hydrogeology & Groundwater

485 Cooper Street, Epping, VIC 3076

Hydrogeology

Description of aquifers within the dataset buffer:

Description	Distance	Direction
Fractured or fissured, extensive aquifers of low to moderate productivity	0m	On-site

Hydrogeology Map of Australia: Commonwealth of Australia (Geoscience Australia)

Creative Commons 3.0 © Commonwealth of Australia <http://creativecommons.org/licenses/by/3.0/au/deed.en>

Groundwater Salinity

On-site Groundwater Salinity:

Groundwater Salinity	Percent Of Site Area
1,000 - 3,500 mg/l	97
500 - 1,000 mg/l	3

Depth to Watertable

On-site Depth to Watertable:

Depth to Watertable	Percent Of Site Area
10 to 20 metres	84
5 to 10 metres	10
Less than 5 metres	3
20 to 50 metres	3

Surface Elevation

Approximate on-site Surface Elevation:

Surface Elevation
110 AHDm to 133 AHDm

Basement Elevation

Approximate on-site Basement Elevation:

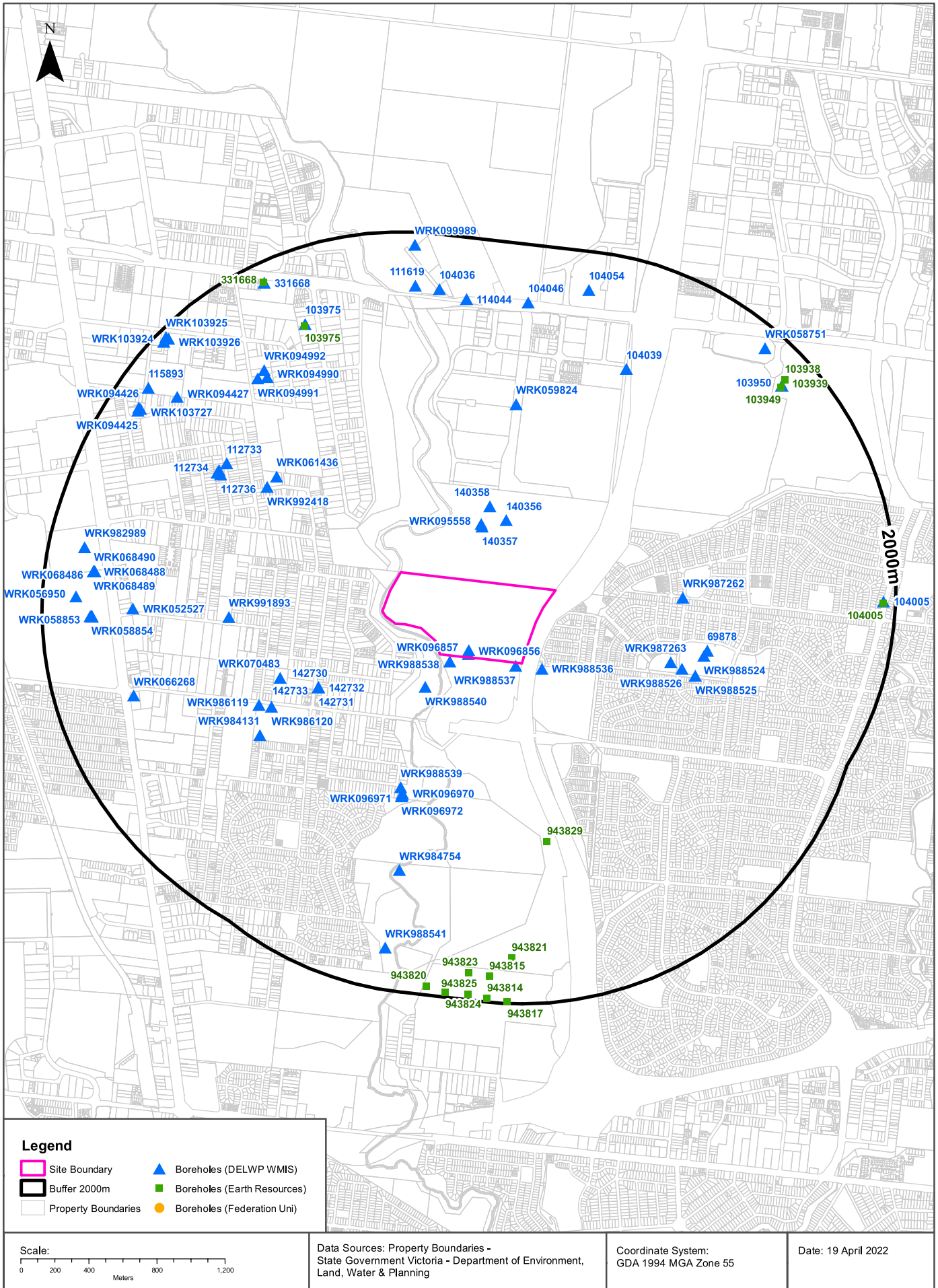
Basement Elevation - Basement Rocks comprise Lower Palaeozoic basement rocks that form the highlands and the crystalline basement; and Mesozoic rocks of the Otway and Gippsland basins both outcropping and subsurface
49 AHDm to 65 AHDm

Groundwater Data Custodian: State Government Victoria - Dept of Environment, Land, Water & Planning

Creative Commons 3.0 © Commonwealth of Australia <http://creativecommons.org/licenses/by/3.0/au/deed.en>

Groundwater Boreholes

485 Cooper Street, Epping, VIC 3076



Groundwater Boreholes

485 Cooper Street, Epping, VIC 3076

Boreholes (DELWP WMIS)

Boreholes from the Department of Environment, Land, Water & Planning's Water Measurement Information System, within the dataset buffer:

Bore Id	Use Type	Drillers Log	Construction	Latest Water Levels	Geology	Completed Date	Dist (m)	Dir
WRK096856	Investigation	0.00m-1.00m CLAY 1.00m-20.00m BASALT	0.00m-17.00m INNER LINING - CASING = UPVC class 12 17.00m-20.00m INNER LINING - SCREEN = UPVC class 12 0.00m-7.00m OUTER LINING - GRAVEL = Cement 7.00m-11.00m OUTER LINING - GRAVEL = Bentonite 11.00m-20.00m OUTER LINING - GRAVEL = Gravel			15/11/2016	0m	On-site
WRK096857	Investigation	0.00m-1.50m CLAY 1.50m-20.00m BASALT	0.00m-17.00m INNER LINING - CASING = UPVC class 12 17.00m-20.00m INNER LINING - SCREEN = UPVC class 12 0.00m-9.00m OUTER LINING - GRAVEL = Cement 9.00m-11.00m OUTER LINING - GRAVEL = Bentonite 11.00m-20.00m OUTER LINING - GRAVEL = Gravel			15/11/2016	0m	On-site
WRK988537							15m	South East
WRK988538							32m	South
WRK988536							115m	South East
WRK988540							210m	South West
140357	Groundwater Investigation	0.00m-1.20m CLAY, ORANGE, BROWN MOIST, STIFF 1.20m-7.00m BASALT, DARK BLUE, BROWN	-0.50m-1.00m INNER LINING - CASING = Pvc Class 18 1.00m-7.00m INNER LINING - SCREEN = Pvc Class 18 0.00m-0.20m OUTER LINING - GRAVEL = Cement 0.20m-0.70m OUTER LINING - GRAVEL = Bentonite 0.70m-7.00m OUTER LINING - GRAVEL = Gravel			08/02/1999	325m	North
WRK095558	Observation	0.00m-0.40m CILTY CLAY 0.40m-0.90m BASALT 1.70m-7.00m BASALT	2.00m-5.00m INNER LINING - SCREEN = Pvc 0.00m-0.50m OUTER LINING - GRAVEL = Cement 0.50m-1.50m OUTER LINING - GRAVEL = Bentonite 1.50m-7.00m OUTER LINING - GRAVEL = Gravel			19/08/2016	340m	North
140356	Groundwater Investigation	0.00m-1.00m CLAY, ORANGE BROWN, MOIST, STIFF 1.00m-6.70m BASALT, DARK BLUE, BROWN	-0.50m-0.70m INNER LINING - CASING = Pvc Class 18 0.70m-6.70m INNER LINING - SCREEN = Pvc Class 18 0.00m-0.10m OUTER LINING - GRAVEL = Cement 0.10m-0.50m OUTER LINING - GRAVEL = Bentonite 0.50m-6.70m OUTER LINING - GRAVEL = Gravel			08/02/1999	377m	North
140358	Groundwater Investigation	0.00m-7.00m SILTY CLAY, DARK BROWN, ORANGE BROWN, MOIST, STIFF 7.00m-13.50m BASALT, DARK BLUE, GREY	-0.50m-7.50m INNER LINING - CASING = Pvc Class 18 7.50m-13.50m INNER LINING - SCREEN = Pvc Class 18 0.00m-0.50m OUTER LINING - GRAVEL = Cement 5.50m-6.50m OUTER LINING - GRAVEL = Bentonite 6.50m-13.50m OUTER LINING - GRAVEL = Gravel			08/02/1999	449m	North

Bore Id	Use Type	Drillers Log	Construction	Latest Water Levels	Geology	Completed Date	Dist (m)	Dir
142730	Groundwater Investigation		-0.50m-7.00m INNER LINING - CASING = Pvc 7.00m-10.00m INNER LINING - SCREEN = Pvc 0.00m-0.50m OUTER LINING - GRAVEL = Cement 5.50m-6.50m OUTER LINING - GRAVEL = Bentonite 6.50m-10.00m OUTER LINING - GRAVEL = Gravel			01/10/1998	573m	South West
142731	Groundwater Investigation		-0.50m-7.00m INNER LINING - CASING = Pvc 7.00m-10.00m INNER LINING - SCREEN = Pvc 0.00m-0.50m OUTER LINING - GRAVEL = Cement 5.50m-6.50m OUTER LINING - GRAVEL = Bentonite 6.50m-10.00m OUTER LINING - GRAVEL = Gravel			01/10/1998	573m	South West
142732	Groundwater Investigation		-0.50m-7.00m INNER LINING - CASING = Pvc 7.00m-10.00m INNER LINING - SCREEN = Pvc 0.00m-0.50m OUTER LINING - GRAVEL = Cement 5.50m-6.50m OUTER LINING - GRAVEL = Bentonite 6.50m-10.00m OUTER LINING - GRAVEL = Gravel			01/10/1998	573m	South West
142733	Groundwater Investigation		-0.50m-7.00m INNER LINING - CASING = Pvc 7.00m-10.00m INNER LINING - SCREEN = Pvc 0.00m-5.50m OUTER LINING - GRAVEL = Cement 5.50m-6.50m OUTER LINING - GRAVEL = Bentonite 6.50m-10.00m OUTER LINING - GRAVEL = Gravel			01/10/1998	573m	South West
WRK070483	Observation					01/01/1998	717m	West
WRK987262							747m	East
WRK987263							794m	East
WRK988539							814m	South
WRK096970	Investigation	0.00m-1.50m CLAY- SAND TRACES 1.50m-4.00m EXTREMELY WEATHERED BASALT 4.00m-12.00m BASALT WEATHERED 12.00m-19.00m FRESH BASALT HARD 19.00m-24.00m CLAY- BROWN 24.00m-33.50m CLAY- BROWN GOLD SILTSTRIPE 33.50m-38.50m SANDSTONE LAYER 29-30 38.50m-39.30m MUDSTONE GREY BLUE	0.00m-19.30m INNER LINING - CASING = Pvc 19.30m-27.30m INNER LINING - CASING = Pvc 27.30m-39.30m INNER LINING - SCREEN = Pvc 0.00m-22.50m OUTER LINING - GRAVEL = Cement 22.50m-25.00m OUTER LINING - GRAVEL = Bentonite 25.00m-39.30m OUTER LINING - GRAVEL = Gravel			18/11/2016	845m	South
WRK096971	Investigation	0.00m-2.00m CLAY 2.00m-19.00m BASALT 19.00m-19.30m CLAY	0.00m-16.20m INNER LINING - CASING = Pvc 16.20m-19.20m INNER LINING - SCREEN = Pvc 0.00m-13.00m OUTER LINING - GRAVEL = Cement 13.00m-14.00m OUTER LINING - GRAVEL = Bentonite 14.00m-19.20m OUTER LINING - GRAVEL = Gravel			10/11/2016	855m	South
WRK986120							855m	South West
WRK096972	Investigation	0.00m-3.00m CLAY 3.00m-19.00m BASALT 19.00m-25.00m CLAY- GREY BROWN 25.00m-39.00m SILTSTONE- BROWN COARSE 39.00m-40.00m MUDSTONE- DARK GREY	0.00m-34.00m INNER LINING - CASING = Pvc 34.00m-40.00m INNER LINING - SCREEN = Pvc 0.00m-21.00m OUTER LINING - GRAVEL = Cement 21.00m-25.00m OUTER LINING - GRAVEL = Bentonite 25.00m-40.00m OUTER LINING - GRAVEL = Gravel			11/11/2016	862m	South
WRK988526							872m	East
WRK991893							905m	West
WRK986119							910m	South West

Bore Id	Use Type	Drillers Log	Construction	Latest Water Levels	Geology	Completed Date	Dist (m)	Dir
WRK061436	Observation	0.00m-0.20m FILL 0.20m-2.60m CLAY 2.60m-3.40m BASALT 3.40m-5.20m CLAY 5.20m-13.40m BASALT	0.60m-7.40m INNER LINING - CASING = Pvc 7.40m-13.40m INNER LINING - SCREEN = Pvc 0.00m-5.00m OUTER LINING - GRAVEL = Cement 5.00m-5.20m OUTER LINING - GRAVEL = Gravel 5.20m-6.50m OUTER LINING - GRAVEL = Bentonite 6.50m-13.40m OUTER LINING - GRAVEL = Gravel		0.60m-7.40m Clay 7.40m-13.40m Basalt	15/03/2011	925m	North West
WRK992418							935m	North West
WRK988524	Groundwater Investigation		0.00m-3.50m OUTER LINING - GRAVEL = Cement 3.50m-4.50m OUTER LINING - GRAVEL = Bentonite 4.50m-8.50m OUTER LINING - GRAVEL = Gravel			03/12/2008	950m	East
69878	Miscellaneous	0.00m-0.20m SOIL 0.20m-3.00m GREY CLAY 3.00m-60.00m BASALT 60.00m-63.00m BASALTIC CLAY 63.00m-65.00m MOTTLED CLAY	0.00m-30.00m INNER LINING - CASING = Pvc 30.00m-36.00m INNER LINING - SCREEN = Pvc 36.00m-65.00m INNER LINING - CASING = Pvc 50.00m-65.00m OUTER LINING - GRAVEL = Not Known		30.00m-36.00m Basalt	20/01/1990	956m	East
WRK988525	Groundwater Investigation		0.00m-2.00m OUTER LINING - GRAVEL = Cement 2.00m-3.00m OUTER LINING - GRAVEL = Bentonite 3.00m-10.50m OUTER LINING - GRAVEL = Gravel			03/12/2008	959m	East
WRK984131							1017 m	South West
WRK059824	Observation	0.00m-1.50m gravelly fill 1.50m-2.50m black clay 2.50m-4.20m grey clay 4.20m-9.00m basalt 9.00m-12.00m red clay 12.00m-14.00m weathered basalt 14.00m-26.00m basalt 26.00m-37.00m scoria 37.00m-39.00m basalt 39.00m-48.00m basalt 48.00m-50.00m red clay	0.00m-39.00m INNER LINING - CASING = Pvc 39.00m-48.00m INNER LINING - SLOT = Pvc 0.00m-11.00m OUTER LINING - GRAVEL = Cement 11.00m-37.00m OUTER LINING - GRAVEL = Bentonite 37.00m-48.00m OUTER LINING - GRAVEL = Gravel 48.00m-50.00m OUTER LINING - GRAVEL = Bentonite		0.00m-39.00m Basalt 39.00m-48.00m Basalt	10/12/2010	1061 m	North
112736	Groundwater Investigation	0.00m-3.60m STIFF GREY CLAY 3.60m-23.00m FRESH GREY BASALT WITH WEATHERED LAYERS	-0.50m-17.00m INNER LINING - CASING = Pvc 17.00m-23.00m INNER LINING - SCREEN = Pvc 0.00m-11.60m OUTER LINING - GRAVEL = Cement 11.60m-12.00m OUTER LINING - GRAVEL = Bentonite 12.00m-23.00m OUTER LINING - GRAVEL = Gravel		17.00m-23.00m Basalt	30/01/1992	1207 m	North West
112733	Groundwater Investigation	0.00m-1.80m STIFF CLAY 1.80m-13.00m GREY FRACTURED BASALT 13.00m-15.20m FIRM RED CLAY 15.20m-25.00m HEAVILY WEATHERED BASALT WITH FRESH BANDS	-0.50m-17.50m INNER LINING - CASING = Pvc 17.50m-23.50m INNER LINING - SCREEN = Pvc 0.00m-4.30m OUTER LINING - GRAVEL = Cement 4.30m-5.10m OUTER LINING - GRAVEL = Bentonite 5.10m-25.00m OUTER LINING - GRAVEL = Gravel		17.50m-23.50m Basalt	29/01/1992	1211 m	North West
112734	Groundwater Investigation	0.00m-1.90m STIFF GREY CLAY & BASALT BOULDER 1.90m-12.50m WEATHERED TO FRESH BASALT 12.50m-14.00m MOIST RED CLAY 14.00m-18.50m WEATHERED BASALT FRESH BANDS	-0.50m-12.00m INNER LINING - CASING = Pvc 12.00m-18.00m INNER LINING - SCREEN = Pvc 0.00m-4.30m OUTER LINING - GRAVEL = Cement 4.30m-5.10m OUTER LINING - GRAVEL = Bentonite 5.10m-18.50m OUTER LINING - GRAVEL = Gravel		12.00m-18.00m Basalt	29/01/1992	1229 m	North West
112735	Groundwater Investigation	0.00m-1.80m STIFF GREY / BROWN CLAY 1.80m-23.00m HEAVILY WEATHERED TO FRESH BASALT	-0.50m-17.00m INNER LINING - CASING = Pvc 17.00m-23.00m INNER LINING - SCREEN = Pvc 0.00m-5.60m OUTER LINING - GRAVEL = Cement 5.60m-6.00m OUTER LINING - GRAVEL = Bentonite 6.00m-23.00m OUTER LINING - GRAVEL = Gravel		17.00m-23.00m Basalt	30/01/1992	1230 m	North West

Bore Id	Use Type	Drillers Log	Construction	Latest Water Levels	Geology	Completed Date	Dist (m)	Dir
WRK984754	Domestic & Stock	0.00m-0.60m SILT DARK BROWN 0.60m-2.30m CLAY DARK BROWN GREY 2.30m-4.50m BASALT EXTREMELY 4.50m-13.00m SILTSTONE	0.00m-4.20m INNER LINING - CASING = Pvc 4.20m-9.20m INNER LINING - SCREEN = Pvc 0.00m-3.20m OUTER LINING - GRAVEL = Bentonite 3.20m-9.20m OUTER LINING - GRAVEL = Gravel 9.20m-10.00m OUTER LINING - GRAVEL = Gravel 10.00m-13.00m OUTER LINING - GRAVEL = Bentonite			16/01/2008	1288 m	South
104039	Not Known					01/01/1988	1366 m	North East
WRK094990	Investigation	0.00m-1.00m FILL 1.00m-3.00m CLAY 3.00m-12.00m BASALT	0.00m-7.00m INNER LINING - CASING = Pvc 7.00m-12.00m INNER LINING - SCREEN = Pvc 0.00m-5.50m OUTER LINING - GRAVEL = Cement 5.50m-6.50m OUTER LINING - GRAVEL = Bentonite 6.50m-12.00m OUTER LINING - GRAVEL = Gravel		7.00m-12.00m Basalt	08/07/2016	1394 m	North West
WRK094991	Investigation	0.00m-1.00m FILL 1.00m-2.00m CLAY 2.00m-12.00m BASALT	0.00m-9.00m INNER LINING - CASING = Pvc 9.00m-12.00m INNER LINING - SCREEN = Pvc 0.00m-7.50m OUTER LINING - GRAVEL = Cement 7.50m-8.50m OUTER LINING - GRAVEL = Bentonite 8.50m-12.00m OUTER LINING - GRAVEL = Gravel		9.00m-12.00m Basalt	08/07/2016	1420 m	North West
WRK094992	Investigation	0.00m-1.00m FILL 1.00m-3.00m CLAY 3.00m-12.00m BASALT	0.00m-7.00m INNER LINING - CASING = Pvc 7.00m-12.00m INNER LINING - SCREEN = Pvc 0.00m-5.50m OUTER LINING - GRAVEL = Cement 5.50m-6.50m OUTER LINING - GRAVEL = Bentonite 6.50m-12.00m OUTER LINING - GRAVEL = Gravel			08/07/2016	1438 m	North West
WRK052527	Observation	0.00m-0.50m fill 0.50m-12.00m basalt	0.00m-6.00m INNER LINING - CASING = Pvc 6.00m-12.00m INNER LINING - SCREEN = Pvc 0.00m-4.50m OUTER LINING - GRAVEL = Cement 4.50m-5.50m OUTER LINING - GRAVEL = Bentonite 5.50m-12.00m OUTER LINING - GRAVEL = Gravel		0.00m-6.00m Basalt 6.00m-12.00m Basalt	10/11/2009	1469 m	West
WRK066268	Observation	0.00m-1.20m FILL 1.20m-4.00m CLAY 4.00m-4.50m CLAY 4.50m-11.00m BASALT	0.00m-9.00m INNER LINING - CASING = Pvc 9.00m-11.00m INNER LINING - SCREEN = Pvc 0.00m-7.50m OUTER LINING - GRAVEL = Cement 7.50m-8.50m OUTER LINING - GRAVEL = Bentonite 8.50m-11.00m OUTER LINING - GRAVEL = Gravel			04/10/2011	1544 m	West
103975	Stock	0.00m-24.07m WEATHERED BASALT	0.00m-24.07m INNER LINING - CASING = Pvc 3.04m-24.07m INNER LINING - SCREEN = Pvc		3.04m-24.07m	01/10/1975	1568 m	North West
114044	Groundwater Investigation	0.00m-1.00m FILL & CLAY 1.00m-6.00m BASALT 6.00m-7.50m RED BASALTIC CLAY 7.50m-14.50m WEATHERED BASALT	-0.50m-10.50m INNER LINING - CASING = Pvc Class 12 9.50m-14.50m INNER LINING - SCREEN = Pvc Class 12 0.00m-1.00m OUTER LINING - GRAVEL = Cement 1.00m-0.00m OUTER LINING - GRAVEL = Seal 9.10m-9.70m OUTER LINING - GRAVEL = Bentonite 9.70m-14.50m OUTER LINING - GRAVEL = Gravel		9.50m-14.50m	28/10/1992	1641 m	North
104046	Domestic, Stock					01/01/1988	1663 m	North
WRK094427	Investigation	0.00m-1.40m CLAY 1.40m-17.00m BASALT/FRESH/LIGHT GREY	0.00m-13.00m INNER LINING - CASING = Pvc 13.00m-17.00m INNER LINING - SCREEN = Pvc 0.00m-11.50m OUTER LINING - GRAVEL = Cement 11.50m-12.50m OUTER LINING - GRAVEL = Bentonite 12.50m-17.00m OUTER LINING - GRAVEL = Gravel		13.00m-17.00m Basalt	26/05/2016	1675 m	North West

Bore Id	Use Type	Drillers Log	Construction	Latest Water Levels	Geology	Completed Date	Dist (m)	Dir
104036	Groundwater Investigation	0.00m-1.00m SOIL AND CLAY 1.00m-7.50m BASALT 7.50m-13.00m CLAY (BASALTIC) 13.00m-20.00m BASALT	0.00m-16.00m INNER LINING - CASING = Pvc 16.00m-20.00m INNER LINING - SCREEN = Pvc 11.00m-20.00m OUTER LINING - GRAVEL = Gravel		16.00m-20.00m Basalt	20/02/1990	1682 m	North
111619	Groundwater Investigation	0.00m-1.50m SILTY CLAY 1.50m-6.00m WEATHERED BASALT 6.00m-22.50m BASALT	-1.20m-0.50m INNER LINING - CASING = Steel -0.50m-22.50m INNER LINING - CASING = Pvc Class 12 16.50m-22.50m INNER LINING - SCREEN = Pvc Class 12			02/12/1991	1690 m	North
WRK058857	Observation					29/09/2010	1707 m	West
WRK071600	Observation					25/10/2012	1708 m	West
WRK058854	Observation	0.00m-1.00m fill 1.00m-13.00m basalt	0.00m-7.00m INNER LINING - CASING = Pvc 7.00m-13.00m INNER LINING - SCREEN = Pvc 0.00m-5.50m OUTER LINING - GRAVEL = Cement 5.50m-6.50m OUTER LINING - GRAVEL = Bentonite 6.50m-13.00m OUTER LINING - GRAVEL = Gravel			29/09/2010	1712 m	West
WRK058855	Observation					29/09/2010	1712 m	West
WRK058856	Observation					29/09/2010	1712 m	West
WRK058858	Observation					29/09/2010	1712 m	West
WRK058859	Observation					29/09/2010	1712 m	West
WRK071601	Observation					23/10/2012	1712 m	West
WRK068490	Observation					23/03/2012	1713 m	West
WRK068491	Observation					23/03/2012	1713 m	West
WRK068492	Observation					23/03/2012	1713 m	West
WRK071596	Observation					25/10/2012	1713 m	West
WRK071602	Observation	0.00m-2.30m CLAY 2.30m-6.00m BASALT	0.00m-6.00m INNER LINING - CASING = Pvc 6.00m-12.00m INNER LINING - SCREEN = Pvc 0.00m-4.50m OUTER LINING - GRAVEL = Cement 4.50m-5.50m OUTER LINING - GRAVEL = Bentonite 5.50m-12.00m OUTER LINING - GRAVEL = Gravel		6.00m-12.00m Basalt	25/10/2012	1713 m	West
WRK068486	Observation	0.00m-2.00m CLAY 2.00m-13.00m BASALT	0.00m-7.00m INNER LINING - CASING = Pvc 7.00m-13.00m INNER LINING - SCREEN = Pvc 0.00m-5.50m OUTER LINING - GRAVEL = Cement 5.50m-6.50m OUTER LINING - GRAVEL = Bentonite 6.50m-13.00m OUTER LINING - GRAVEL = Gravel		7.00m-13.00m Basalt	23/03/2012	1716 m	West
WRK068487	Observation					23/03/2012	1716 m	West
WRK068488	Observation	0.00m-0.50m FILL 0.50m-1.50m CLAY 1.50m-12.80m BASALT	0.00m-6.80m INNER LINING - CASING = Pvc 6.80m-12.80m INNER LINING - SCREEN = Pvc 0.00m-4.50m OUTER LINING - GRAVEL = Cement 4.50m-5.50m OUTER LINING - GRAVEL = Bentonite 5.50m-12.80m OUTER LINING - GRAVEL = Gravel		6.80m-12.80m Basalt	23/03/2012	1716 m	West
WRK068489	Observation					23/03/2012	1716 m	West

Bore Id	Use Type	Drillers Log	Construction	Latest Water Levels	Geology	Completed Date	Dist (m)	Dir
WRK071594	Observation	0.00m-1.50m CLAY 1.50m-12.00m BASALT	0.00m-6.00m INNER LINING - CASING = Pvc 6.00m-12.00m INNER LINING - SCREEN = Pvc 0.00m-4.50m OUTER LINING - GRAVEL = Cement 4.50m-5.50m OUTER LINING - GRAVEL = Bentonite 5.50m-12.00m OUTER LINING - GRAVEL = Gravel		6.00m-12.00m Basalt	25/10/2012	1716 m	West
WRK071597	Observation					25/10/2012	1716 m	West
WRK071598	Observation					25/10/2012	1716 m	West
WRK071599	Observation					25/10/2012	1716 m	West
WRK058853	Observation	0.00m-1.00m fill 1.00m-13.00m basalt	0.00m-7.00m INNER LINING - CASING = Pvc 7.00m-13.00m INNER LINING - SCREEN = Pvc 0.00m-5.50m OUTER LINING - GRAVEL = Cement 5.50m-6.50m OUTER LINING - GRAVEL = Bentonite 6.50m-13.00m OUTER LINING - GRAVEL = Gravel		7.00m-13.00m Basalt	29/09/2010	1719 m	West
WRK988541							1752 m	South
104054	Not Known					01/01/1988	1777 m	North
103949	Not Known					31/12/1970	1792 m	North East
103950	Not Known					31/12/1970	1792 m	North East
103951	Not Known					31/12/1970	1792 m	North East
103952	Not Known					31/12/1970	1792 m	North East
WRK982989							1794 m	West
WRK056950	Dewatering						1807 m	West
WRK103727	Investigation	0.00m-0.70m CLAY 0.70m-17.00m BASALT	0.00m-13.00m INNER LINING - CASING = Pvc 13.00m-17.00m INNER LINING - SCREEN = Pvc 0.00m-0.30m OUTER LINING - GRAVEL = Cement 0.30m-11.50m OUTER LINING - GRAVEL = Bentonite 11.50m-12.50m OUTER LINING - GRAVEL = Bentonite 12.50m-17.00m OUTER LINING - GRAVEL = Gravel			21/11/2017	1810 m	North West
WRK094425	Investigation	0.00m-1.40m CLAY 1.40m-17.00m BASALT	0.00m-13.00m INNER LINING - CASING = Pvc 13.00m-17.00m INNER LINING - SCREEN = Pvc 0.00m-0.30m OUTER LINING - GRAVEL = Cement 0.30m-12.50m OUTER LINING - GRAVEL = Bentonite 12.50m-17.00m OUTER LINING - GRAVEL = Gravel		13.00m-17.00m Basalt	26/05/2016	1816 m	North West
WRK094426	Investigation	0.00m-1.40m CLAY 1.40m-19.00m BASALT	0.00m-13.00m INNER LINING - CASING = Pvc 13.00m-19.00m INNER LINING - SCREEN = Pvc 0.00m-0.30m OUTER LINING - GRAVEL = Cement 0.30m-12.50m OUTER LINING - GRAVEL = Bentonite 12.50m-19.00m OUTER LINING - GRAVEL = Gravel		13.00m-19.00m Basalt	26/05/2016	1823 m	North West
115893	Groundwater Investigation	0.00m-1.00m GREY CLAY 1.00m-18.00m BASALT	0.00m-15.00m INNER LINING - CASING = Pvc 15.00m-18.00m INNER LINING - SCREEN = Pvc 0.10m-14.50m OUTER LINING - GRAVEL = Gravel 14.50m-14.80m OUTER LINING - GRAVEL = Bentonite 14.80m-18.00m OUTER LINING - GRAVEL = Gravel			07/05/1993	1842 m	North West

Bore Id	Use Type	Drillers Log	Construction	Latest Water Levels	Geology	Completed Date	Dist (m)	Dir
WRK058751	Observation	0.00m-2.00m clay 2.00m-6.00m clay light brown 6.00m-21.00m basalt extremely weathered 21.00m-33.00m basalt with bands of limestone 33.00m-38.50m hard basalt	0.00m-6.00m INNER LINING - CASING = Pvc 6.00m-28.50m INNER LINING - CASING = Pvc 28.50m-35.50m INNER LINING - SCREEN = Pvc 35.50m-38.50m INNER LINING - CASING = Pvc 0.00m-6.00m OUTER LINING - GRAVEL = Cement 6.00m-12.00m OUTER LINING - GRAVEL = Bentonite 12.00m-13.00m OUTER LINING - GRAVEL = Packer			22/10/2010	1882 m	North East
331668	Non Groundwater					13/07/1971	1885 m	North West
104005	Domestic	0.00m-0.10m TOP SOIL 0.10m-4.50m MOTTLED CLAY 4.50m-5.13m SAND AND GRAVEL	0.00m-4.50m INNER LINING - CASING = Pvc 4.50m-5.13m INNER LINING - SCREEN = Pvc		4.50m-5.13m Sand	01/05/1984	1925 m	East
WRK099989	Investigation	0.00m-1.20m CLAY 1.20m-4.00m BASALT 4.00m-15.00m WEATHERED BASALT	0.00m-10.00m INNER LINING - CASING = Pvc 10.00m-15.00m INNER LINING - SCREEN = Pvc 0.00m-0.30m OUTER LINING - GRAVEL = Cement 0.30m-8.50m OUTER LINING - GRAVEL = Bentonite 8.50m-9.50m OUTER LINING - GRAVEL = Bentonite 9.50m-15.00m OUTER LINING - GRAVEL = Gravel			19/04/2017	1930 m	North
WRK103926	Observation	0.00m-0.50m FILL 0.50m-3.00m GREY. CLAY 3.00m-7.00m BASALT 7.00m-11.00m BASALT WEATHERED	0.00m-7.00m INNER LINING - CASING = Pvc 7.00m-11.00m INNER LINING - SCREEN = Pvc 0.00m-5.50m OUTER LINING - GRAVEL = Cement 5.50m-6.50m OUTER LINING - GRAVEL = Bentonite 6.50m-11.00m OUTER LINING - GRAVEL = Gravel			04/12/2017	1940 m	North West
WRK103924	Observation	0.00m-0.50m GRAVITY FILL 0.50m-2.50m CLAY GREY 2.50m-8.00m BASALT 8.00m-12.00m BASALT. WEATHERED	0.00m-8.00m INNER LINING - CASING = Pvc 8.00m-12.00m INNER LINING - SCREEN = Pvc 0.00m-6.50m OUTER LINING - GRAVEL = Cement 6.50m-7.50m OUTER LINING - GRAVEL = Bentonite 7.50m-12.00m OUTER LINING - GRAVEL = Seal			05/12/2017	1948 m	North West
WRK103925	Observation	0.00m-0.50m GRAVITY FILL 0.50m-1.50m CLAY. GREY 1.50m-11.00m BASALT 11.00m-17.00m BASALT WEATHERED	0.00m-13.00m INNER LINING - CASING = Pvc 13.00m-17.00m INNER LINING - SCREEN = Pvc 0.00m-11.50m OUTER LINING - GRAVEL = Cement 11.50m-12.50m OUTER LINING - GRAVEL = Bentonite 12.50m-17.00m OUTER LINING - GRAVEL = Seal			04/12/2017	1957 m	North West

Boreholes WMIS Data Custodian: State Government Victoria - Dept of Environment, Land, Water & Planning
Creative Commons 3.0 © Commonwealth of Australia <http://creativecommons.org/licenses/by/3.0/au/deed.en>

Groundwater Boreholes

485 Cooper Street, Epping, VIC 3076

Boreholes (Earth Resources Database)

Boreholes from the Earth Resources dataset, within the dataset buffer:

Bore Id	Bore Type	Company	Usage	Method	Status	Drill Date	Depth	Elevation	Accuracy (m)	Dist (m)	Dir
943829		Rio Tinto Exploration Pty Ltd		Mechanical Auger	Completed	09/08/1960	6.71		100	1053 m	South
103975		Private Individual/Corporation	Stock/Poultry water supply			31/10/1975	24.07		300	1556 m	North West
943821		Mines Department, Victoria		Mechanical Auger	Completed	31/07/1960	19.81	335.20	100	1730 m	South
103949		Private Individual/Corporation				12/06/1958	30.48	128.93	300	1780 m	North East
103950		Private Individual/Corporation				12/06/1958	30.48	123.74	300	1780 m	North East
103951		Private Individual/Corporation				12/06/1958	29.87	123.44	300	1780 m	North East
103952		Private Individual/Corporation				12/06/1958	30.48	117.39	300	1780 m	North East
103938		Private Individual/Corporation				12/06/1958	55.47	128.93	100	1828 m	North East
103939		Private Individual/Corporation				12/06/1958	42.98	122.22	100	1828 m	North East
103940		Private Individual/Corporation				12/06/1958	42.98	120.70	100	1828 m	North East
103946		Private Individual/Corporation				12/06/1958	30.48	128.63	100	1828 m	North East
103947		Private Individual/Corporation				12/06/1958	30.48	121.01	100	1828 m	North East
103948		Private Individual/Corporation				12/06/1958	31.09	120.70	100	1828 m	North East
103953		Private Individual/Corporation				12/06/1958	30.48	121.62	100	1828 m	North East
103954		Private Individual/Corporation				12/06/1958	30.48	119.79	100	1828 m	North East
943823		Mines Department, Victoria		Mechanical Auger	Completed	31/07/1960	20.42	328.40	100	1839 m	South
943815		Mines Department, Victoria		Mechanical Auger	Completed	31/07/1960	19.51	326.70	100	1846 m	South
331668		Department of Manufacturing & Industry Development		Rotary (diamond/drag bit)		13/07/1971	52.43	144.25	300	1887 m	North West
104005		Private Individual/Corporation	Domestic water supply	Hand Auger		01/05/1984	5.13		100	1923 m	East
943820		Mines Department, Victoria		Mechanical Auger	Completed	15/07/1960	24.99	304.30	100	1945 m	South
943825		Mines Department, Victoria		Mechanical Auger	Completed	31/07/1960	25.60	319.40	100	1965 m	South
943824		Mines Department, Victoria		Mechanical Auger	Completed	31/07/1960	26.52	319.70	100	1968 m	South

Bore Id	Bore Type	Company	Usage	Method	Status	Drill Date	Depth	Elevation	Accuracy (m)	Dist (m)	Dir
943814		Mines Department, Victoria		Mechanical Auger	Completed	16/06/1960	17.98	318.30	100	1976 m	South
943817		Mines Department, Victoria		Mechanical Auger	Completed	31/07/1960	18.59	320.20	100	1985 m	South

Boreholes Earth Resources Data Source: © The State of Victoria, Department of Economic Development, Jobs, Transport and Resources 2015. Creative Commons Attribution 3.0 Australia

Boreholes (Federation University)

Boreholes from the Federation University Australia dataset, within the dataset buffer:

Bore Id	Authority	Type	Uses	Initial TD	Log	Dist (m)	Dir
N/A	No records in buffer						

Boreholes FedUni Data Source: © Federation University Australia